

Carshalton Boys Sports College / Sutton

Maths Building: 775 sqm

FBM have replaced a series of temporary buildings used for the maths department at Carshalton Boys Sports College in South London with a new state of the art facility. Preweathered Cor-Ten steel, a material better-known for its sculptural qualities, has been used to clad the building in perforated and solid panels. Combining its intriguing visual aesthetic with sensitive design and careful detailing helped to secure buy-in from staff.

The new facility provides eight new fully accessible classrooms, staff offices, and WC facilities within a single storey building. The internal design of the classrooms was fully considered through simple and effective off-site and modular construction techniques to help meet the tight programme and funding requirements.

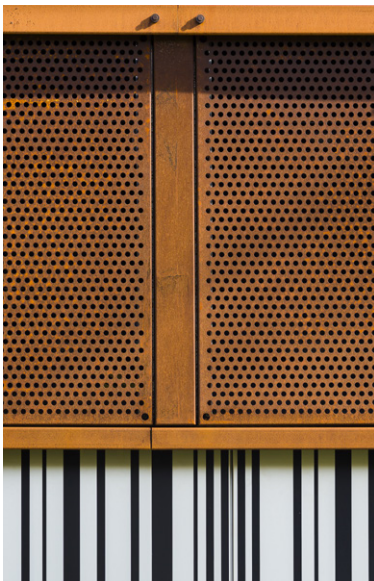
We were keen to maximise the amount of daylight inside the new building by using full-height glazed internal windows overlooking the corridor. Staff were initially concerned about this increased glazing as raising a potential distraction for students. Post completion feedback has shown that this feature had a positive impact, improving student attentiveness and behaviour within a more mature working environment. The generous teaching spaces make use of moveable partitions to allow for future-proof flexible teaching environments as well as accommodating community use outside of teaching hours.



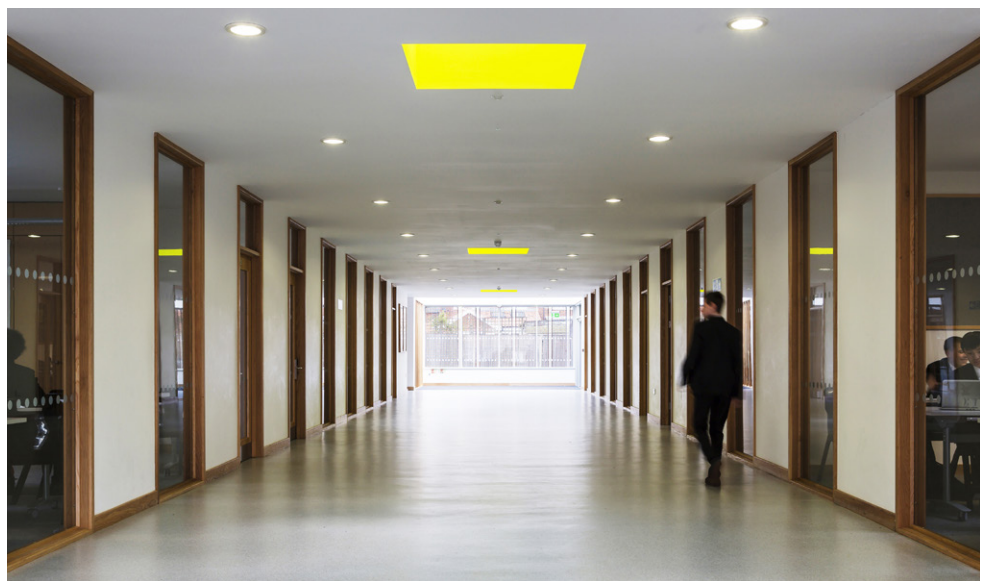
Cor-ten Maths Building facade & main entrance



Light filled corridor



Exterior Cor-ten detail



Generous spine corridor flooded with daylight

English Building: 1030 sqm





English Building facade & main entrance



Site Plan

The new English Building facility provides ten flexible classrooms of 60 sqm (capable of being expanded to 120s qm by incorporating a central folding partition screen) and an adaptable learning resource space over two storeys with dedicated storage space and ancillary circulation, toilet, plant, stairs, lift and office provision. These are arranged around a central, naturally illuminated and ventilated circulation space that acts as break out provision for smaller group work.

-  Maths Building
-  English Building



FBMArchitects

15 –18 Featherstone Street, London EC1Y 8SL
+44 020 7251 0543 / studio@fbmarchitects.com
www.fbmarchitects.com Twitter: @FBMArchitects

<http://www.fbmarchitects.com/project/carshalton-boys-sports-college-new-maths-department/>